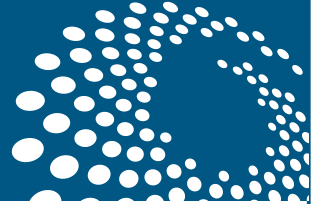


# Vehicle Parapet

## PMH-13

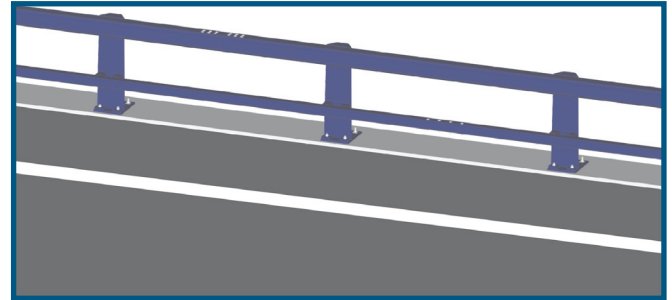
(H2 Level, according to EN 1317-2)



### 1. FIELD OF APPLICATION:

The PMH-13 steel vehicle parapet is a vehicle restraint system specifically designed for:

- Bridge deck edges (bridges, viaducts).
- Top section of retaining walls.
- Other similar road works.



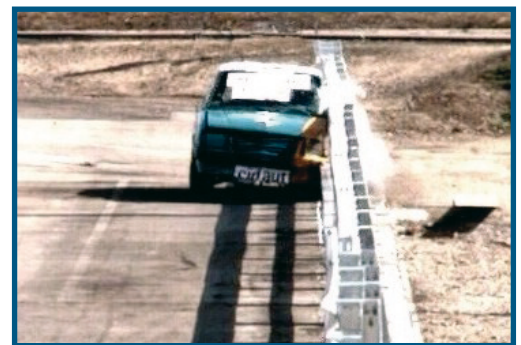
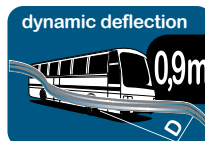
### 2. PERFORMANCE:

The PMH-13 steel vehicle parapet has passed a series of full scale crash tests, in accordance with the EN 1317-2 European Standard, for a high containment level of H2 (TB 51 test: bus with a weight of 13.000 kg., at a speed of 70 km/h and an angle of 20° + TB 11 test: car with a weight of 900 kg., at a speed of 100 km/h and an angle of 20°).



#### TB 51 Test

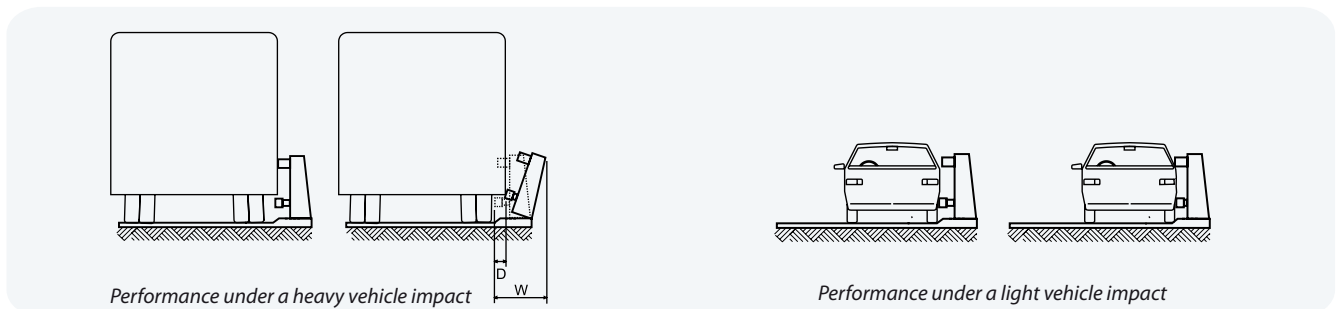
Bus, 13.000 kg.,  
at 70 km/h, 20°



#### TB 11 Test

Car, 900 kg.,  
at 100 km/h, 20°

The breakaway anchoring system is designed to allow its release during the impact of a heavy vehicle. In this case, the structure's design prevents the bridge deck from being damaged. The tubular energy dissipator of the lower rail provides the system with energy absorption and deformation capabilities, which guarantee an affordable level of severity to light vehicles, incapable of releasing anchoring system.



# Vehicle Parapet

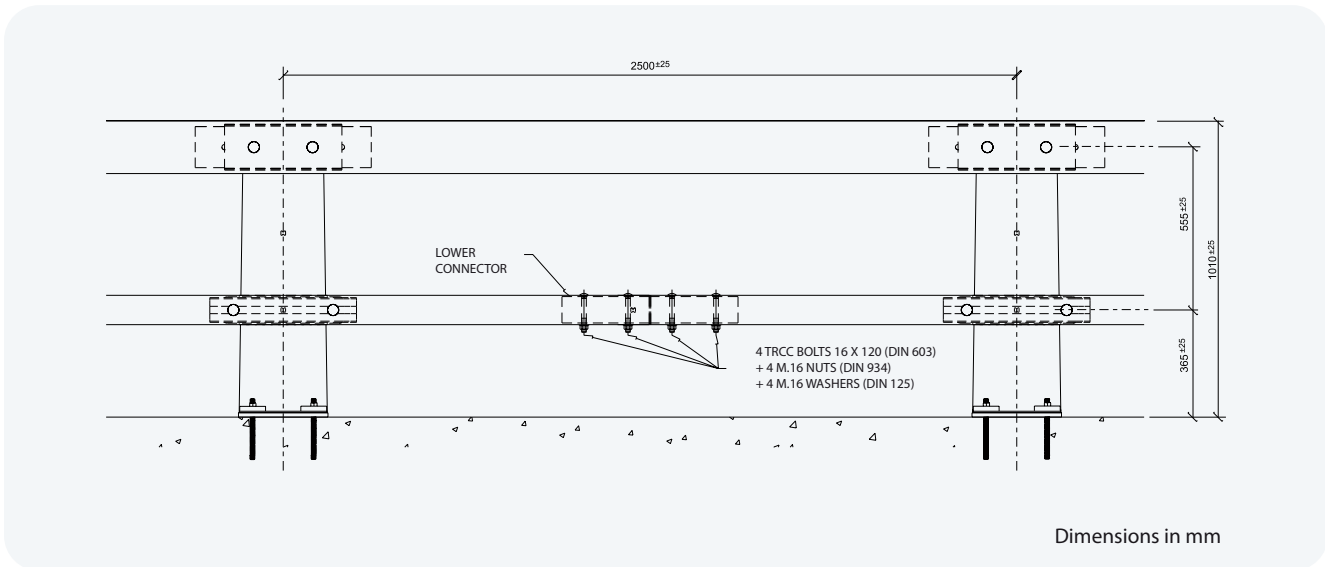
## PMH-13

(H2 Level, according to EN 1317-2)



### 3. DESCRIPTION:

The PMH-13 steel vehicle parapet is totally manufactured from hot-rolled steel sheet of S235JR and S275JR grades (according to EN 10025) and hot dip galvanized (according to EN ISO 1461).



The breakaway anchoring system is composed of four rods partially embedded in the deck, crossing the base plate of post and being tightened by means of breakaway washers at front.

